

# JET

**HVBS-712K**

**Ленточная пила по  
металлу**

**414459M...220/50/1**

**414559T...380/50/3**

## **Список деталей**

**WMH Tool Group AG**

Bahnstrasse 24,

CH - 8603 Schwerzenbach

[www.wmhtoolgroup.ch](http://www.wmhtoolgroup.ch)

[info@wmhtoolgroup.ch](mailto:info@wmhtoolgroup.ch)

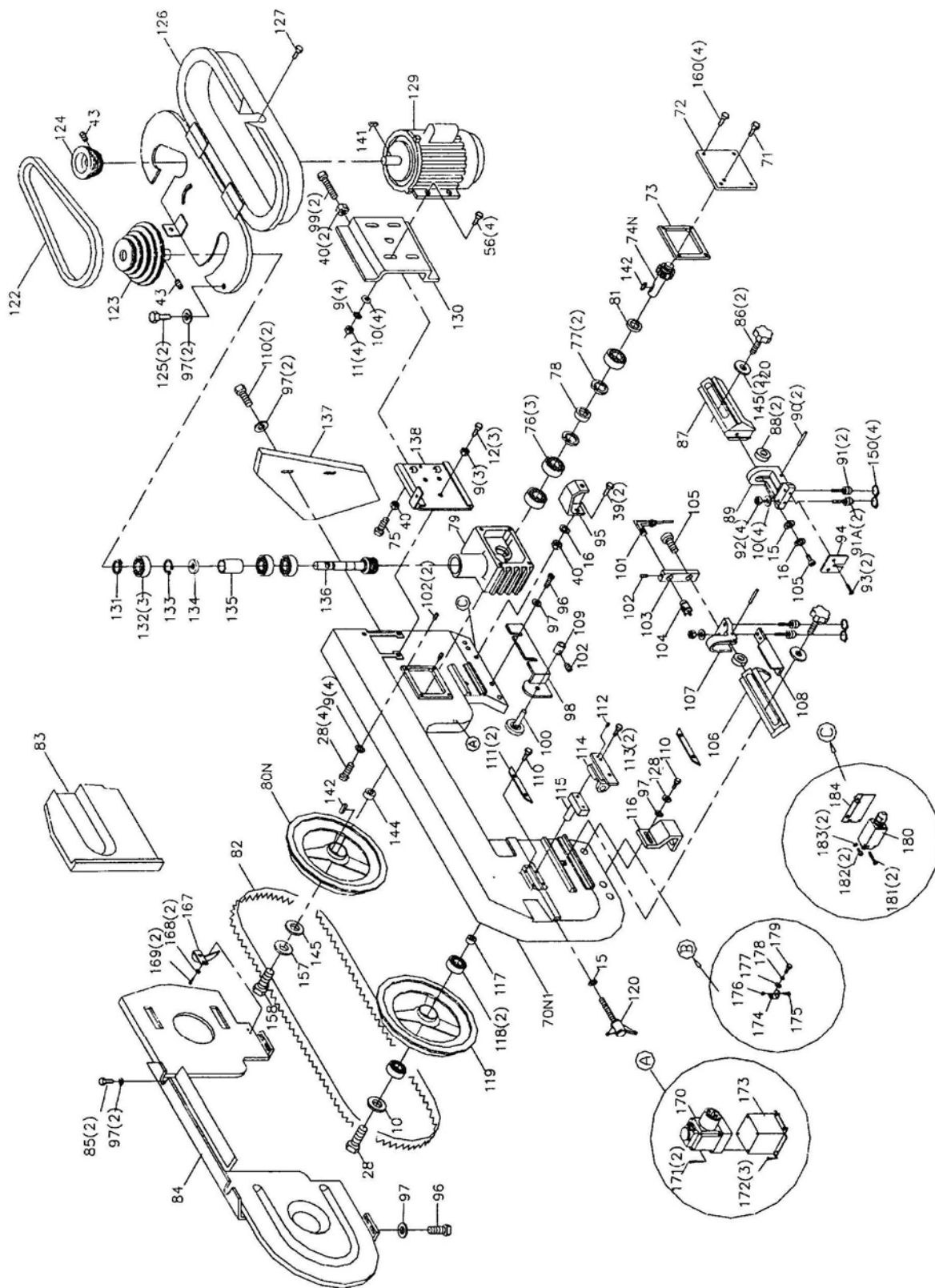
Tel +41 (0)44 806 47 48

Fax +41 (0) 44 806 47 58

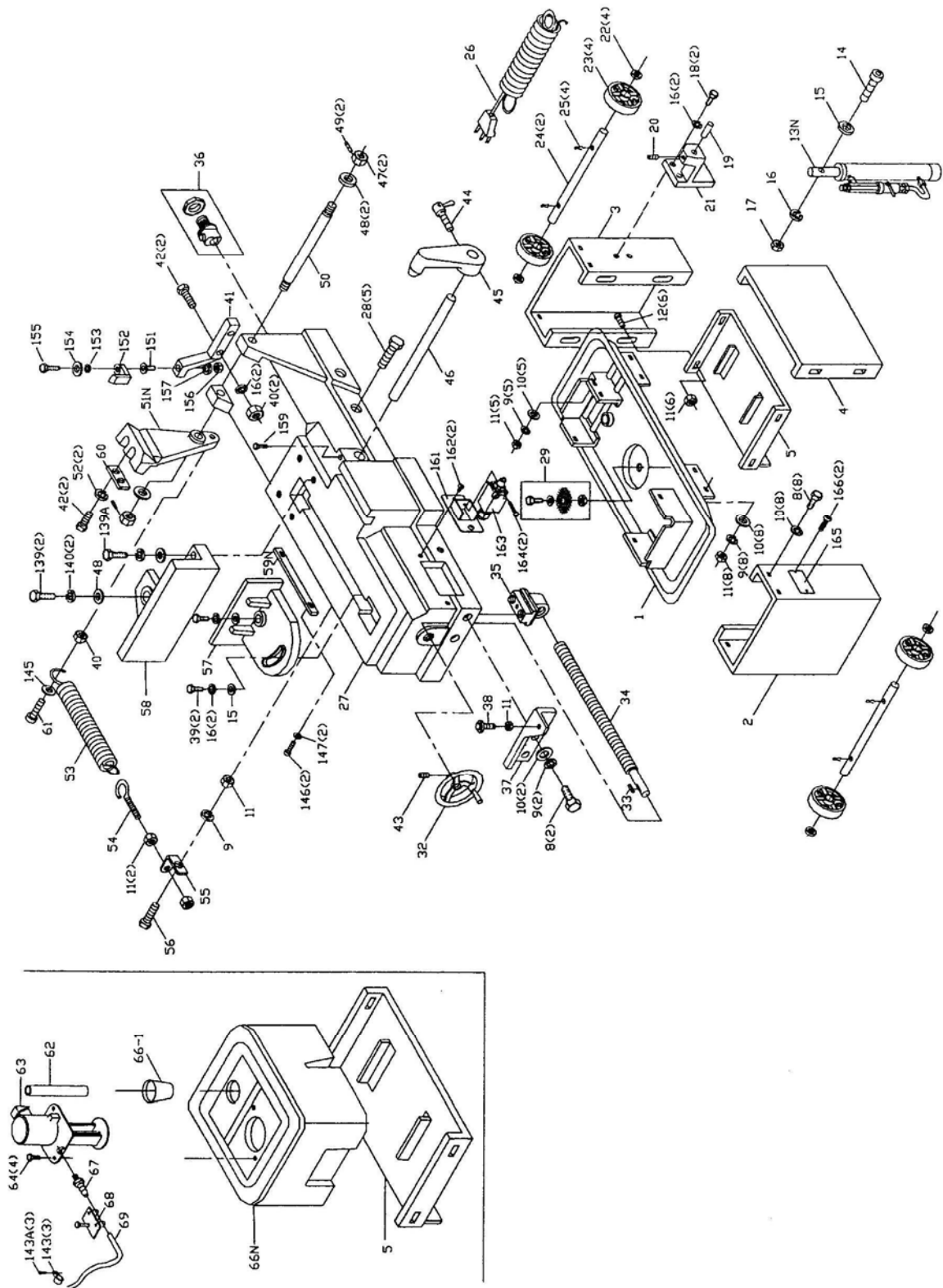
P-414459M/414459T...04/07



# Монтажная схема: консоль пилы в сборе



## Монтажная схема: основание пилы в сборе



## Список деталей: ленточная пила в сборе

№	артикул	обозначение	размер	кол-во
1	HVBS7MW-1	Coolant Pan		1
2	HVBS7MW-2	Base Leg (left)		1
3	HVBS7MW-3	Base Leg (right)		1
4	HVBS7MW-4	Skirt		1
5	HVBS7MW-5	Shelf		1
8	TS-0051031	Hex Cap Bolt	5/16x3/4	10
9	TS-0720081	Lock Washer	5/16	27
10	TS-0680031	Flat Washer	5/16	32
11	TS-0561021	Hex Nut	5/16	27
12	TS-0051011	Hex Cap Bolt	5/16x1/2	9
13	HVBS7MW-13	Cylinder Assembly(S/N:01028160 and lower)		1
13N	HVBS7MW-13N	Cylinder Assembly(S/N:01028161 and higher)		1
	HVBS7MW-13-RK	Cylinder Repair Kit (not shown)		1
14	TS-150506	Hex Socket Cap Screw **	M10x40	1
15	TS-0680041	Flat Washer **	3/8	4
16	TS-0720091	Lock Washer **	3/8	10
17	TS-154007	Hex Nut**	M10	1
18	TS-0060051	Hex Cap Bolt**	3/8x1	2
19	HVBS7MW-19	Support Rod **		1
20	TS-0050011	Hex Cap Bolt**	1/4x1/2	1
21	HVBS7MW-21	Bottom Support **		1
22	TS-0680081	Flat Washer	5/8	4
23	HVBS7MW-23	Wheel	5"	4
24	HVBS7MW-24	Wheel Shaft		2
25	HVBS7MW-25	Split Pin		4
26	HVBS7MW-26	Power Cord		1
	HVBS7MW-26-1	Power Cord (motor - main switch -not shown)		1
	HVBS7MW-26-2	Power Cord (main switch - pump - not shown)		1
27	HVBS7MW-27	Table		1
28	TS-0081051	Hex Cap Bolt	5/16x1	10
29	HVBS7MW-29	Filter Assembly		1
31	HVBS7MW-31	Switch Box Assembly (S/N: 5011368 & lower)		1
32	HVBS7MW-32	Wheel Handle		1
33	HVBS7MW-33	Key	5x20	1
34	HVBS7MW-34	Lead Screw		1
35	HVBS7MW-35	Nut Seat...		1
36	HVBS7MW-36	Strain Relief Assembly		1
37	HVBS7MW-37	Support Plate		1
38	HVBS7MW-38	Stop Screw		1
39	TS-0060061	Hex Cap Bolt **	3/8x1-1/4	4
40	TS-0561031	Nut**	3/8	8
41	HVBS7MW-41	90° Support		1
42	TS-0060071	Hex Cap Bolt	3/8x1-1/2	4
43	TS-0270031	Set Screw	5/16x3/8	4
44	HVBS7MW-44	Thumb Screw		1
45	HVBS7MW-45	Stop Block		1
46	HVBS7MW-46	Stop Rod		1
47	TS-0561031	Hex Nut	1/2	2
48	TS-0680061	Flat Washer	1/2	4
49	TS-026702	Set Screw	1/4x1/4	2
50	HVBS7MW-50	Support Shaft		1

## Список деталей: ленточная пила в сборе

№	артикул	обозначение	размер	кол-во
51	HVBS7MW-51	Pivot Arm (S/N: 80910746 and lower)		1
51N	HVBS7MW-51N	Pivot Arm (S/N: 80910747 and higher)		1
52	TS-0720091	Lock Washer	3/8	2
53	HVBS7MW-53	Spring		1
54	HVBS7MW-54	Spring Adjusting Rod		1
55	HVBS7MW-55	Spring Bracket		1
56	TS-0051061	Hex Cap Bolt	5/16x1-1/2	5
57	HVBS7MW-57	Vise Jaw (left)		1
58	HVBS7MW-58	Vise Jaw (right)		1
59	HVBS7MW-59	Scale (S/N: 010217984 and lower)		1
59N	HVBS7MW-59N	Scale (S/N: 010217985 and higher)		1
60	HVBS7MW-60	Arm Support Plate		1
61	TS-020908	Hex Socket Cap Screw	3/8x1-3/4	1
62	HVBS7MW-62	Hose		1
63	HVBS7MW-63	Pump		1
64	TS-0050021	Hex Cap Bolt	1/4x5/8	4
65	HVBS7MW-65	Tank Cover		1
66	HVBS7MW-66	Coolant Tank (S/N: 8091100 and lower)		1
66N	HVBS7MW-66N	New Coolant Tank (S/N: 80911001 and higher)		1
66-1	HVBS7MW-66-1N	Plastic Funnel (S/N: 80911001 and higher)		1
67	HVBS7MW-67	Hose Fitting		1
68	HVBS7MW-68	Hose Clamp		1
69	HVBS7MW-69	Hose		1
70	HVBS7MW-70	Saw Bow (S/N: 8091100 and lower)		1
70N	HVBS7MW-70N	Saw Bow (S/N: 8091101 and higher)		1
70N1	HVBS7MW-70N1	Saw Bow(JET Mark) (S/N: 010218161 and higher)		1
71	HVBS7MW-71	Vent Plug *		1
72	HVBS7MW-72	Gear Box Cover *		1
73	HVBS7MW-73	Gear Box Gasket *		1
74	HVBS7MW-74	Worm Gear * (S/N: 00114808 and lower)		1
74N	HVBS7MW-74N	Worm Gear* (S/N: 0011.4809 and higher)		1
75	TS-051061	Hex Cap Bolt*	5/16x1-1/4	1
76	BB-6005Z	Ball Bearing *		3
77	HVBS7MW-77	C-Ring *	S-25	2
78	HVBS7MW-78	Oil Seal *		1
79	HVBS7MW-79	Gear Box *		1
80	HVBS7MW-80	Blade Wheel (right) (S/N: 00114808 and lower)		1
80N	HVBS7MW-80N	Blade Wheel (right) (S/N: 00114809 and higher)		1
81	HVBS7MW-81	Worm Bushing *		1
82	HVBS7MW-82	Bi-Metal Blade		1
83	HVBS7MW-83	Wheel Cover		1
84	HVBS7MW-84	Rear Wheel Cover		1
85	HVBS7MW-85E	Hex Cap Bolt	1/4x5/8	2
86	HVBS7MW-86	Lock Knob		2
87	HVBS7MW-87	Adjustable Bracket (right)		1
88	BB-608ZZ	Ball Bearing		2
89	HVBS7MW-89	Adjustable Blade Seat (right)		1
90	HVBS7MW-90	Bearing Pin		2
91	HVBS7MW-91	Eccentric Shaft Assembly (outside)		2

## Список деталей: ленточная пила в сборе

№	артикул	обозначение	размер	кол-во
91A.....	HVBS7MW-91A .....	Center Shaft Assembly (inside) (S/N: 80910747 and higher) .....		2
.....	BB-608Z2 .....	Ball Bearing (not shown) .....		8
.....	HVBS7MW-91-2 ....	Eccentric Shaft (outside)(not shown) .....		2
.....	HVBS7MW-91A-2 ..	Center Shaft (inside)(S/N: 80910747 and higher) .....		2
.....	HVBS7MW-91-3 ....	C-Ring (not shown) .....		4
92 .....	TS-0561031 .....	Hex Nut .....	3/8 .....	4
93 .....	TS-0813021 .....	Hex Cap Bolt .....	1/4x3/8 .....	2
94 .....	HVBS7MW-94 .....	Vertical Cutting Plate .....		1
95 .....	HVBS7MW-95 .....	Top Support** .....		1
96 .....	TS-0813032 .....	Round Head Screw .....	1/4x1/2 .....	4
97 .....	TS-0680021 .....	Flat Washer .....	1/4 .....	9
98 .....	HVBS7MW-98 .....	Brush Holder .....		1
99 .....	TS-0060111 .....	Hex Cap Bolt .....	3/8x2-1/2 .....	2
100.....	HVBS7MW-100 ....	Brush .....		1
101.....	HVBS7MW-101 ....	Nozzle Cock.....		1
102.....	TS-0267021 .....	Set Screw .....	1/4x1/4 .....	3
103.....	HVBS7MW-103 ....	Nozzle Cock Support.....		1
104.....	HVBS7MW-104 ....	Valve.....		1
105.....	TS-0208071 .....	Hex Socket Cap Screw .....	5/16x1-1/4 .....	2
106.....	HVBS7MW-106 ....	Adjustable Bracket (left) .....		1
107.....	HVBS7MW-107 ....	Adjustable Blade Seat (left) .....		1
108.....	HVBS7MW-108 ....	Blade Guard .....		1
109.....	HVBS7MW-109 ....	Brush Support .....		1
110.....	TS-0050011 .....	Hex Cap Bolt .....	1/4x1/2 .....	7
111.....	HVBS7MW-111 ....	Guide Plate.....		2
112.....	HVBS7MW-112 ....	Set Screw .....	5/16x3/4 .....	1
113.....	TS-0051071 .....	Hex Cap Bolt .....	5/16x1-1/2 .....	2
114.....	HVBS7MW-114 ....	Blade Tension Block.....		1
115.....	HVBS7MW-115 ....	Sliding Draw Block.....		1
116.....	HVBS7MW-116 ....	Switch Cut-Off Trip .....		1
117.....	HVBS7MW-117 ....	Bearing Bushing .....		1
118.....	BB-6203Z .....	Ball Bearing.....		2
119.....	HVBS7MW-119 ....	Blade Wheel (left) .....		1
120.....	HVBS7MW-120 ....	Blade Tension Handwheel .....		1
122.....	VB-3V270 .....	V-Belt.....		1
123.....	HVBS7MW-123 ....	Worm Pulley .....		1
124.....	HVBS7MW-124 ....	Motor Pulley .....		1
125.....	HVBS7MW-125 ....	Hex Head Screw.....	1/4x3/8 .....	2
126.....	HVBS7MW-126 ....	Pulley Cover .....		1
127.....	HVBS7MW-127E....	Hex Cap Bolt .....	1/4x5/8 .....	1
128.....	TS-0720071 .....	Lock Washer.....	1/4 .....	1
129.....	HVBS7MW-129 ....	Motor .....		1
.....	HVBS7MW-129A....	Motor Fan (not shown).....		1
.....	HVBS7MW-129B....	Motor Fan Cover (not shown).....		1
130.....	HVBS7MW-130 ....	Motor Mount Plate .....		1
131.....	HVBS7MW-131 ....	C-Ring* .....	S-17.....	1
132.....	BB-6003Z .....	Ball Bearing *		3
133.....	HVBS7MW-133 ....	C-Ring *	R-35.....	1
134.....	HVBS7MW-134 ....	Oil Seal *		1
135.....	HVBS7MW-135 ....	Bearing Bushing *		1

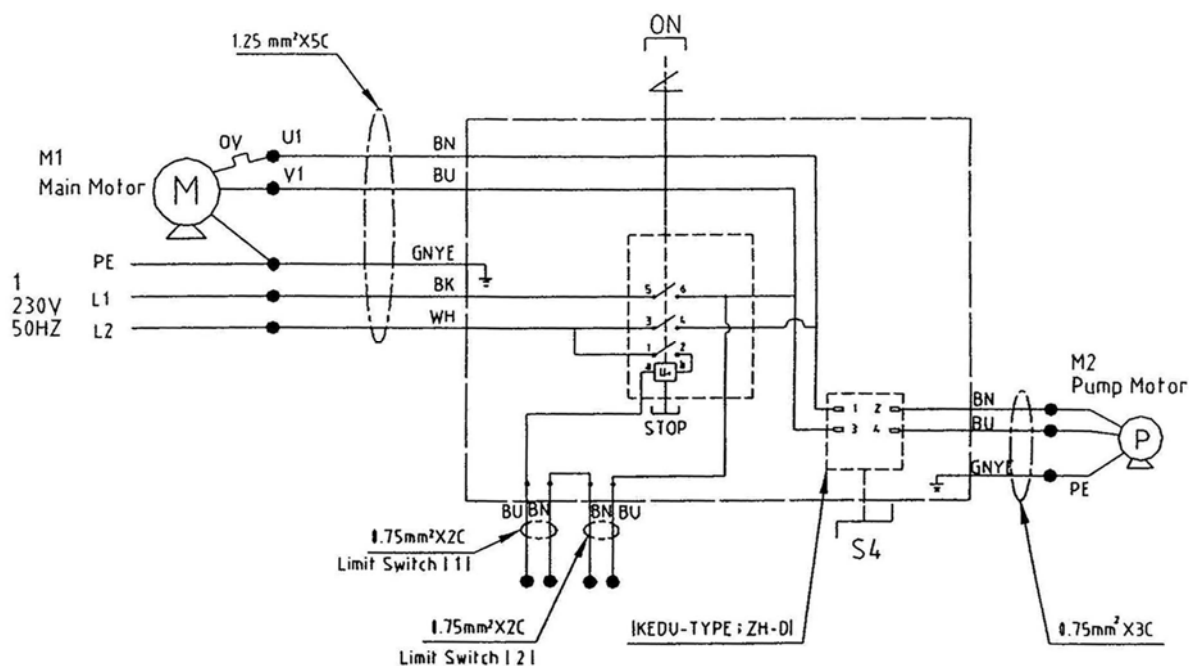
## Список деталей: ленточная пила в сборе

№	артикул	обозначение	размер	кол-во
136.....	HVBS7MW-136	Worm Shaft*		1
137.....	HVBS7MW-137	Support Plate.....		1
138.....	HVBS7MW-138	Motor Support Plate.....		1
139.....	HVBS7MW-139	Hex Cap Bolt	1/2x1-1/4	1
139A....	HVBS7MW-139A....	Hex Cap Bolt	1/2x1-3/16	1
140.....	TS-0720111	Lock Washer.....	1/2	2
141.....	HVBS7MW-141	Key	5x20	1
142.....	HVBS7MW-142	Key*	6x20	2
143.....	HVBS7MW-143	Hose Clamp.....		3
143A....	HVBS7MW-143A....	Round Head Screw	3/16x3/8	3
144.....	HVBS7MW-144	Bearing Bushing.....		1
145.....	HVBS7MW-145	Flat Washer.....	3/8 x 1	4
146.....	HVBS7MW-146	Cross Screw	1/8 x 1/4	2
147.....	HVBS7MW-147	Flat Washer.....	1/8	2
150.....	HVBS7MW-150	E-Ring	E-7	2
151.....	HVBS7MW-151..	Support Screw		1
152.....	HVBS7MW-152	Bracket.....		1
.....	HVBS7MW-152A....	Arm Stop Assembly CP.....		1
153.....	HVBS7MW-153	Spring		1
154.....	HVBS7MW-154	Spring Cap		1
155.....	HVBS7MW-155	Hex Socket Cap Screw	3/16 x 1/2	1
156.....	TS-0561031	Nut	3/8..	1
157.....	TS-0710091	Lock Washer.....	3/8	2
158.....	TS-0060051	Hex Cap Bolt	3/8 x 1	1
159.....	HVBS7MW-159	Hex Cap Bolt	5/16x3/4	1
160.....	HVBS7MW-160	Hex Cross Head Bolt w/ Lock Washer*	1/4 x 5/8	4
.....	HVBS7MW-GB.....	Gear Box Assembly (not shown).....		1
161.....	HVBS7MW-161E....	Limit Switch Seat		1
162.....	HVBS7MW-162E....	Round Hd. Screw	3/16x3/8	2
163.....	HVBS7MW-163E....	Limit Switch		1
164.....	HVBS7MW-164E....	Round Hd. Screw	3/16 x 30.....	2
165.....	HVBS7MW-165E....	Cover		1
166.....	HVBS7MW-166E....	Round Hd. Screw	3/16x3/8	2
167.....	HVBS7MW-167E....	Limit Switch Stop Plate		1
168.....	HVBS7MW-168E....	Spring Washer	3/16.....	2
169.....	HVBS7MW-169E....	Hex. Soc. Screw.....	3/16 x 3/8	2
170.....	HVBS7MW-170E....	Magnetic Switch		1
171.....	HVBS7MW-171E....	Round Hd. Screw	3/16x45.....	2
172.....	HVBS7MW-172E....	Round Hd. Screw	3/16x3/8	3
173.....	HVBS7MW-173E....	Support Plate.....		1
174.....	HVBS7MW-174E....	Limit Switch Rack.....		1
175.....	HVBS7MW-175E....	Hex. Hd. Screw	1/4 x 1/2	1
176.....	HVBS7MW-176E....	Nut	1/4	1
177.....	HVBS7MW-177E....	Washer.....	1/4	1
178.....	HVBS7MW-178E....	Spring Washer	1/4	1
179.....	HVBS7MW-179E....	Hex. Hd. Screw	1/4 x 1/2	1
180.....	HVBS7MW-180E....	Limit Switch		1
181.....	HVBS7MW-181E....	Round Hd. Screw	3/16x30.....	2
182.....	HVBS7MW-182E....	Hex. Soc. Screw.....	3/16x3/8	2
183.....	HVBS7MW-183E....	Spring Washer	3/16.....	2
184.....	HVBS7MW-184E....	Limit Switch Bracket.....		1

\* included in HVBS7MW-GB Gear Box Assembly

\*\* included in HVBS7MW-13-RK Cylinder Repair Kit

## Схема подключения 230/50/1



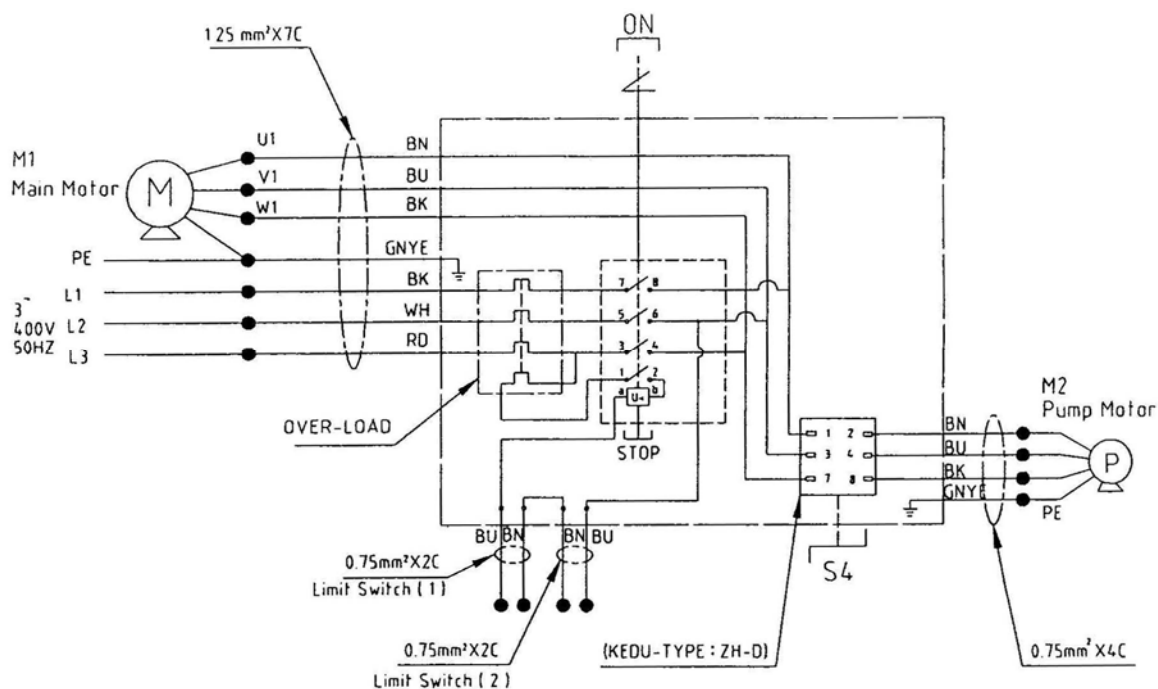
### HVBS-712K 414459M

	Colour of strands	Цвета проводов
BK	Black	Чёрный
WH	White	Белый
BU	Blue	Синий
YE	Yellow	Жёлтый
RD	Red	Красный
BN	Brown	Коричневый
GY	Grey	Серый
GNYE	Green-yellow	Зелёно-жёлтый
OG	Orange	Оранжевый
VT	Violet	Фиолетовый

	Meaning of symbol	Обозначение символа
M	Motor	Двигатель
S	Switch	Выключатель
C	Condenser	Конденсатор
E	Electronic unit	Электронный блок
F	Fuse	Предохранитель
RS	Reversing switch	Переключатель полярности
CS	Centrifugal switch	Центробежный выключатель
OL	Overload cut-off	Защита от перегрузки
LS	Limit switch	Концевой выключатель



## Схема подключения 380/50/3



### HVBS-712K 414459T

	Colour of strands	Цвета проводов
BK	Black	Чёрный
WH	White	Белый
BU	Blue	Синий
YE	Yellow	Жёлтый
RD	Red	Красный
BN	Brown	Коричневый
GY	Grey	Серый
GNYE	Green-yellow	Зелёно-жёлтый
OG	Orange	Оранжевый
VT	Violet	Фиолетовый

	Meaning of symbol	Обозначение символа
M	Motor	Двигатель
S	Switch	Выключатель
C	Condenser	Конденсатор
E	Electronic unit	Электронный блок
F	Fuse	Предохранитель
RS	Reversing switch	Переключатель полярности
CS	Centrifugal switch	Центробежный выключатель
OL	Overload cut-off	Защита от перегрузки
LS	Limit switch	Концевой выключатель